

SafeNet Axis 5.3 Quick Start Guide For End Users

Welcome!

Welcome to SafeNet Axis. You are just minutes away from using one of the most secure smart card-based information security systems available today. SafeNet Axis is compatible with many different security applications and with many popular commercial Web browsers and e-mail packages, such as those provided by Microsoft.

In the next few minutes you will install the software and hardware necessary to use your SafeNet smart card. This guide provides details about installing both your SafeNet Axis software and your smart card reader. It also describes how to initialize your smart card and enroll yourself with SafeNet Axis. Each process is very simple and easy to complete. Once you have completed these processes, it is recommended that you consult the **SafeNet Axis Users Guide** for additional information. Select *Start -> Programs -> Datakey Axis* to access the manual.

Installing SafeNet Axis and your Smart Card Reader

The SafeNet Axis software installation process you perform will be one of the following:

- Automated installation of card reader driver and Policy Client software
- Manual installation of card reader driver and Policy Client software

Your system administrator will tell you which method your organization is using.

Automated Installation of SafeNet Axis Software

Your administrator may arrange it so that all the necessary SafeNet Axis software (the card reader driver software and the Policy Client software) is automatically downloaded from your corporate network and installed onto your computer when you restart your computer. You simply:

1. Close all open applications.
2. Attach your smart card reader or your USB token to your computer.
3. Restart your computer.
SafeNet Axis is automatically installed from your corporate network onto your computer.
4. Go to *Enrolling with SafeNet Axis* on page 4.

Manual installation of card reader driver software

To manually install the necessary card reader driver software:

1. Attach your smart card reader or your USB token to your computer.
2. Do one of the following:
 - If the SafeNet Axis card reader driver installation program files are located on a network server, navigate to that server and double-click the appropriate *.msi* file (the file that corresponds with your particular card reader).
 - If the SafeNet Axis card reader driver installation programs are located on a CD-ROM, insert the CD-ROM into your CD-ROM drive. Navigate to the *Reader Install* folder on the CD-ROM and double-click the appropriate *.msi* file (the file that corresponds with your particular card reader).
3. Follow the on-screen instructions for installing the card reader driver software. When prompted, be sure to specify the correct reader type for the reader you attached in Step 1.
4. When the installation program is finished, restart your computer.

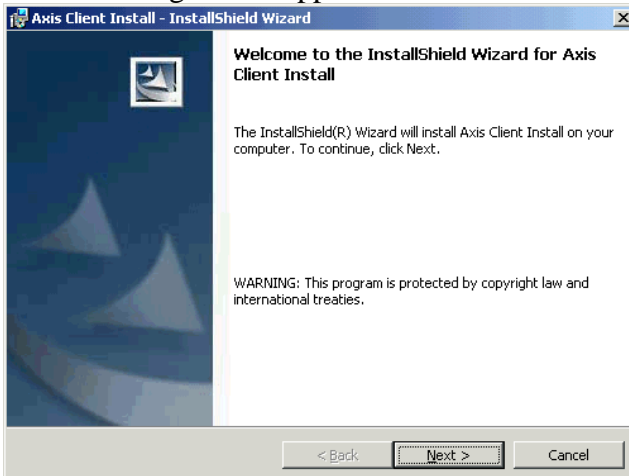
Manual installation of SafeNet Axis Policy Client

To manually install SafeNet Axis from a network server or from a CD:

Important!: You must install your card reader driver software before installing your Policy Client software (see the previous section).

1. Close all open applications.
2. Do one of the following:
 - If the SafeNet Axis installation file is located on a network server, navigate to that server and double-click the installation file (the file name will end with *.msi*).
 - If the SafeNet Axis installation file is located on CD-ROM, insert the CD into your CD-ROM drive. The installation program should start automatically. If it does not, navigate to the CD and double-click the installation file (the file name will end with *.msi*).

The following screen appears:

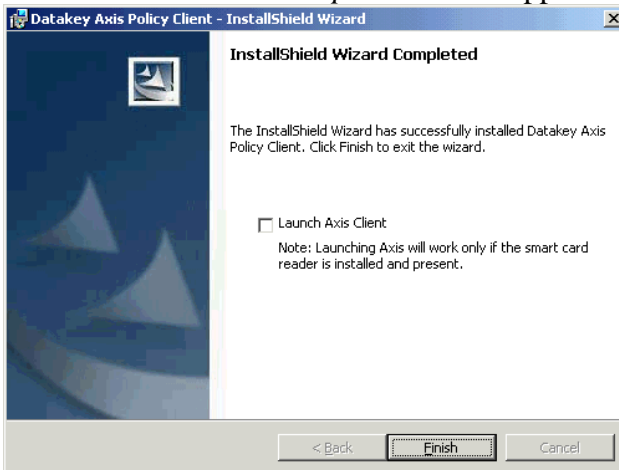


3. Click *Next*.

The *Ready to Install the Program* screen appears:

4. To begin copying files to your computer, click *Install*.

The installation program will begin copying files to your computer. Follow any special instructions that may appear. When the installation process is complete the *InstallShield Wizard Completed* screen appears.



5. Enable the *Launch Axis Client* check box and then click *Finish*. (If the *Launch Axis Client* check box does not appear it means you have a feature installed that requires a restart of your computer before SafeNet Axis is fully installed.)

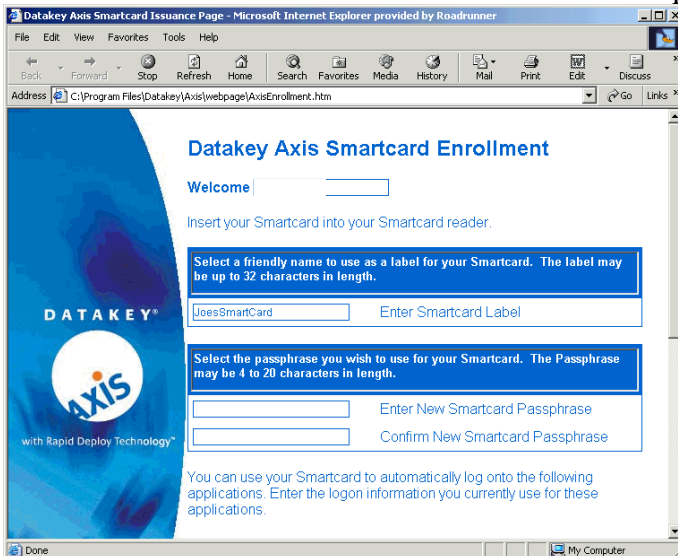
If you don't enable *Launch Axis Client*, the Policy Client icon will not appear in your system tray until after you restart your computer. When the installation process is complete, one or more new icons may appear on your computer desktop (for Enrollment, Enrollment Update, and Smart Card Recovery).

Enrolling with SafeNet Axis

After the installation process is complete, you must use the SafeNet Axis Enrollment program to personalize your smart card and to save your current application logon information to your smart card.

1. Start Enrollment by double-clicking the Enrollment icon on your computer's desktop or by selecting *Start -> Programs -> Datakey Axis -> Enrollment*.

The SafeNet Axis Smart Card Enrollment window appears:

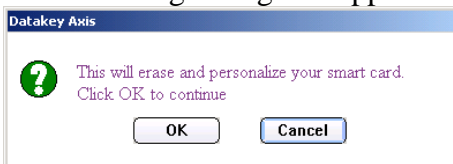


2. In the *Enter Smart Card Label* box, type a name or phrase that will uniquely identify this as your smart card.
3. In the *Enter New Smart Card Passphrase* box, type the passphrase you wish to use when logging on to your smart card.
Important! Remember this passphrase, because you will use it each time you need to log on to your smart card.
4. Re-type the same passphrase in the *Confirm New Smart Card Passphrase* box.

The bottom portion of the SafeNet Axis Smartcard Enrollment window contains a list of the applications assigned by your administrator to work with your SafeNet smart card.

5. In the fields provided, type the logon information you currently use when logging on to each of the applications.
6. Click *Continue*.

The following dialog box appears:



7. To personalize your smart card using the information you typed in the previous steps, click *OK*. To abort this process, click *Cancel*.

If you click *OK*, Enrollment will initialize your smart card.

When the Enrollment process is complete you are ready to use your smart card!

Using Your Smart Card

Your smart card is now ready for use. When needed, you will be prompted to log on to your card. Simply type the passphrase you selected during the enrollment process (see Step 3 of Enrolling with SafeNet Axis on page 4).

You can use your smart card for a number of purposes. For example:

- Your unique application logon information and/or your digital credentials are now stored securely on the smart card. Whenever this information is required, SafeNet Axis directs the request to your smart card and the authentication is performed automatically on your behalf.
- If your administrator chose to include it in your system, you can use SmartLogon to store logon information for applications and Web sites in which you have a personal interest.
- If your administrator chose to include it in your system, you can use SmartNotes to securely store personal notes and data on your SafeNet smart card.

See the **SafeNet Axis Users Guide** for information on using SmartLogon and SmartNotes.